


Human SCF Protein

Cat #: PRP1234

Size: 5 µg/20 µg/100 µg /1 mg

Product Information

	Product Name: Human SCF Protein		
REF	Catalog Number: PRP1234	LOT	Lot Number: Refer to product label
	Purity: > 98 % as determined by SDS-PAGE		
	Storage: Store at -20°C		Preparation method: E.coli
	Shipping: The product is shipped at ambient temperature.		

Background: Stem Cell Factor (SCF) that binds to the c-Kit receptor is produced by fibroblasts and endothelial cells. The soluble and transmembrane forms of the protein are formed by alternative splicing of the same RNA transcript and the presence of both soluble and transmembrane SCF is required for normal hematopoietic function. SCF plays an important role in hematopoiesis, spermatogenesis, and melanogenesis. It also promotes mast cell adhesion, migration, proliferation, and survival. Human SCF shares 79% - 87% a.a. sequence identity with canine, feline, mouse, and rat SCF. Furthermore, human SCF is weakly active on mouse cells.

Sequence: Amino acid sequence derived from Human SCF (Glu26-Ala189) (P21583) was expressed.

Protein length: The recombinant Human SCF consists of 164 amino acids and predicts a molecular mass of 18.6 kDa.

Biological Activity: Testing in Progress.

Endotoxin: <0.1 EU per µg of the protein by the LAL method.

Formulation: Lyophilized from 20 mM Tris-HCl, 50 mM NaCl, pH 8.0.

Storage Instructions: Lyophilized protein product should be stored desiccated below -20°C. Upon reconstitution, the protein should be stored at 4°C between 2-7 days and for future use below -20°C. For long term storage it is recommended to add a carrier protein (0.1% HSA or BSA). Please prevent freeze-thaw cycles.

Usage notes: Always centrifuge tubes before opening. It is recommended to reconstitute the lyophilized protein using the buffer we provided not less than 100 µg/ml, which can then be further diluted to other aqueous solutions.

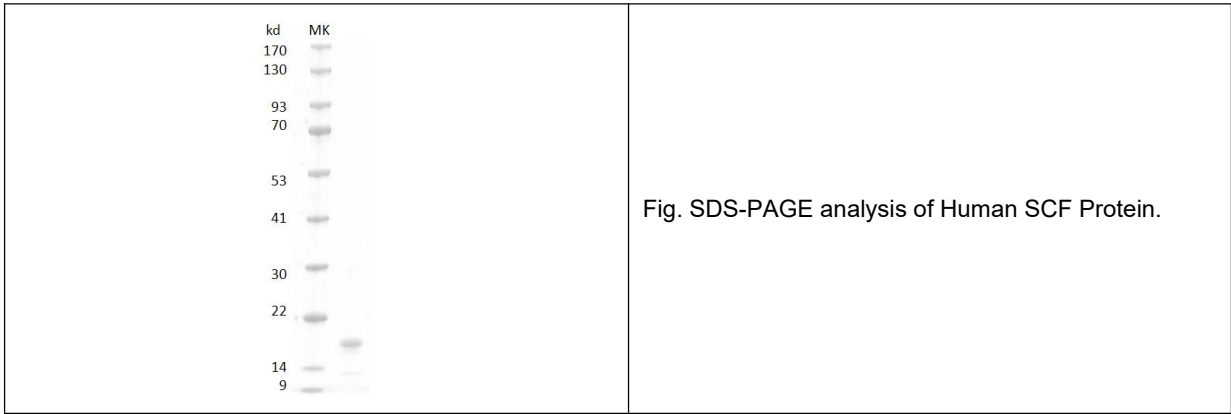


Fig. SDS-PAGE analysis of Human SCF Protein.

Note: The product listed herein is for research use only and is not intended for use in human or clinical diagnosis. Suggested applications of our products are not recommendations to use our products in violation of any patent or as a license. We cannot be responsible for patent infringements or other violations that may occur with the use of this product.